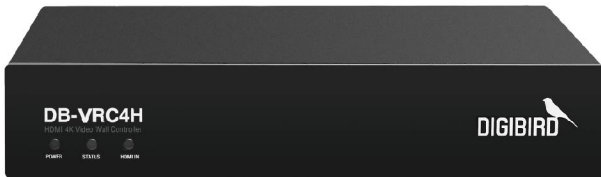


# Quick Setup Guide



This Quick Guide will help you install and set up a DB-VRC4 Series controller. If you have any additional questions that are not included in this guide, you can check the User Guide in the CD accompanying this purchase, or you can contact a DigiBird representative or reseller in your area.

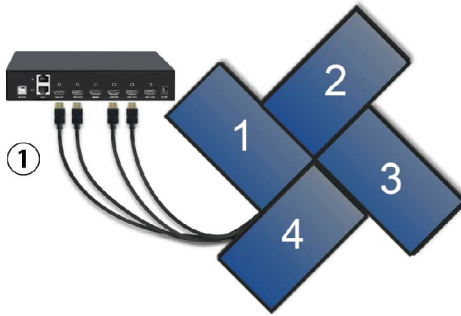


**HDCP™**  
HIGH-BANDWIDTH DIGITAL CONTENT PROTECTION

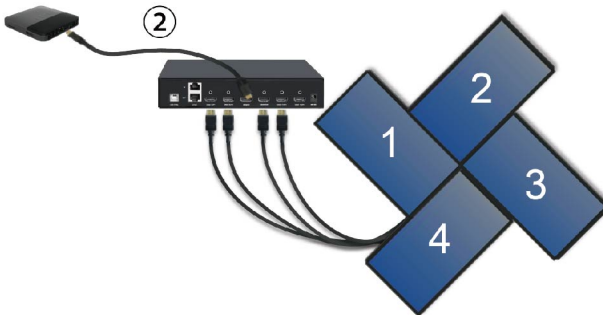
**HDMI®**  
HIGH-DEFINITION MULTIMEDIA INTERFACE

## Hardware Connections

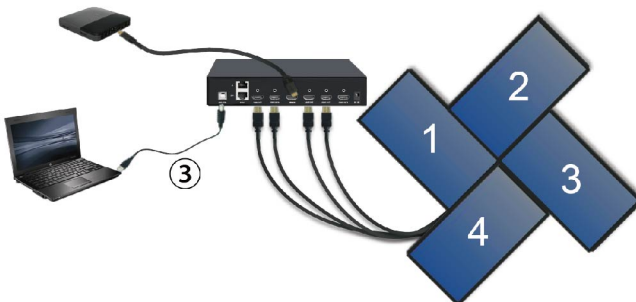
1. Use HDMI cables to connect the displays to the controller's outputs.



2. Connect the input source to the controller's input.

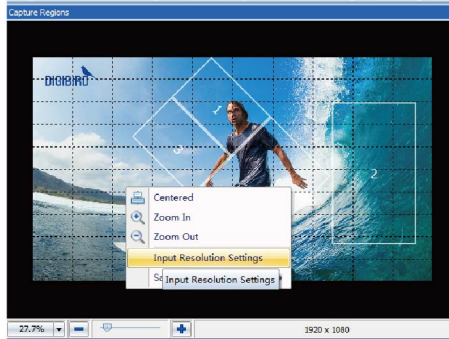


3. Connect a PC with the installed control software to the controller's USB port.

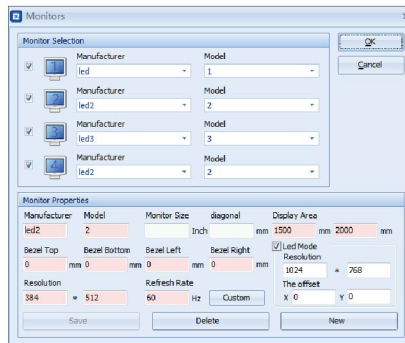


## Software Setup

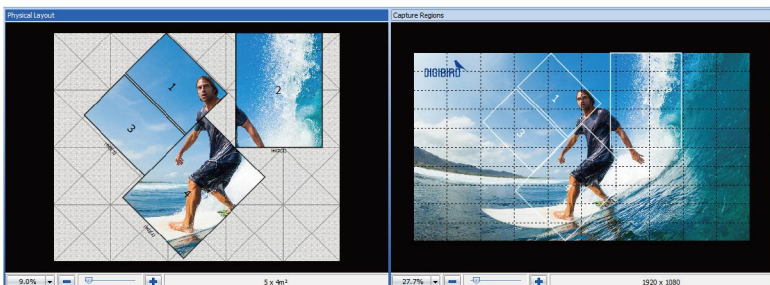
1. Install the software and drivers by double clicking “RCSCtrl\_2.8.x”
2. Open the software and right click inside the Capture Region to set the input resolutions  
The Capture Region is located on the right half of the software interface.



3. Select the monitors used on your video wall from the Monitors Settings on the toolbar.



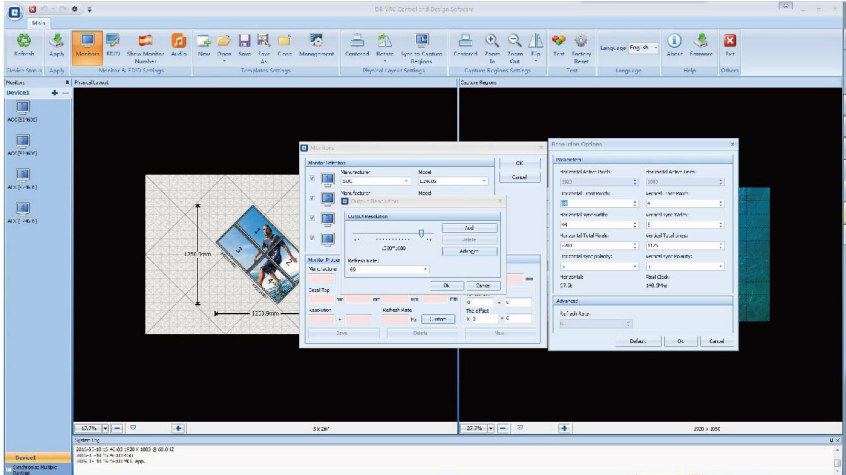
4. Position and rotate the displays in the physical Layout region to achieve the desired layout. The Physical Layout region is on the left half of the software interface.



# FAQ

## 1. Why can't I find my monitor in the monitors list?

- a. The monitors list includes most well-known monitor brands. If your video wall's monitors are not in the list, you can manually input its parameters into the Monitor Properties section. Click Save and your monitor will now appear in the list.



## 2. Why didn't anything happen after I clicked the Apply button?

- a. Check that the USB cable between the PC and the controller are securely connected.
- b. Ensure that the cables are securely connected between the controller and the monitors.

## 3. My monitors are static or blurred. What happened?

In this case, one of the following should solve this problem:

- a. Ensure that all input and output cables and their connections are secure.
- b. If you are using adapters, splitters or are cascading units together, ensure that all connections are secure.
- c. Confirm that the input has the correct EDID and make sure the input resolution is the same with that of the controller.
- d. Make sure the input source is operating properly. Check the input's status on the software by clicking the Refresh button in the toolbar. Information about the input source's status will appear in the System Log at the bottom of the software interface.
- e. Click the Test button on the toolbar and change the colors to make sure the monitors and the outputs are operating normally.