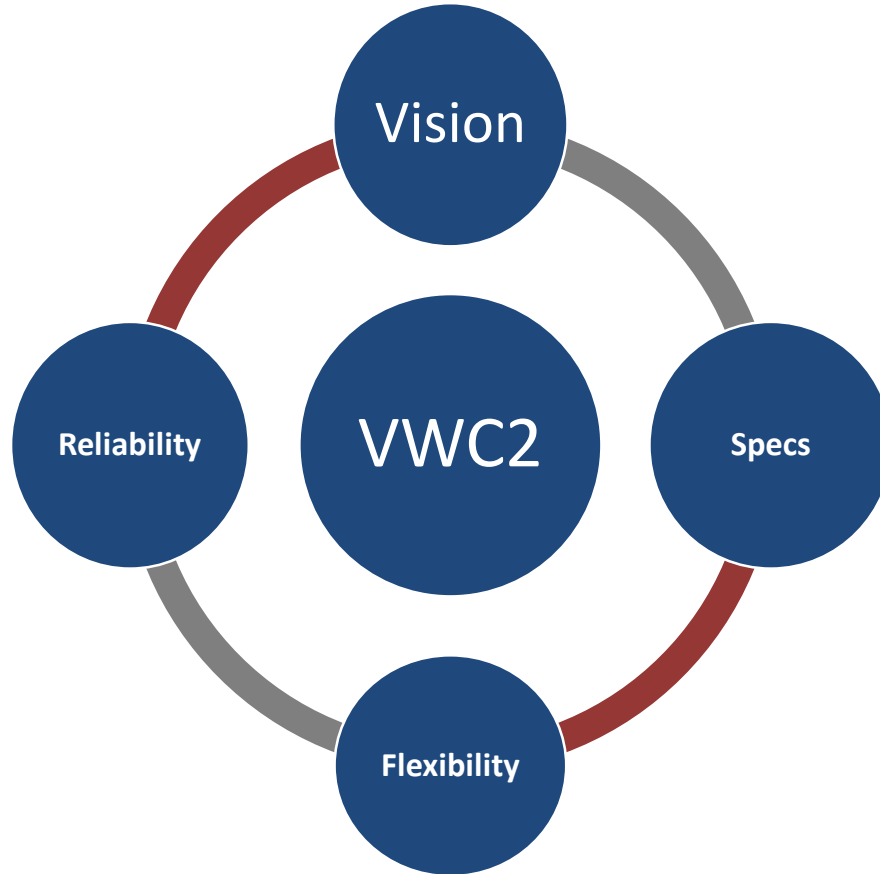


VWC2

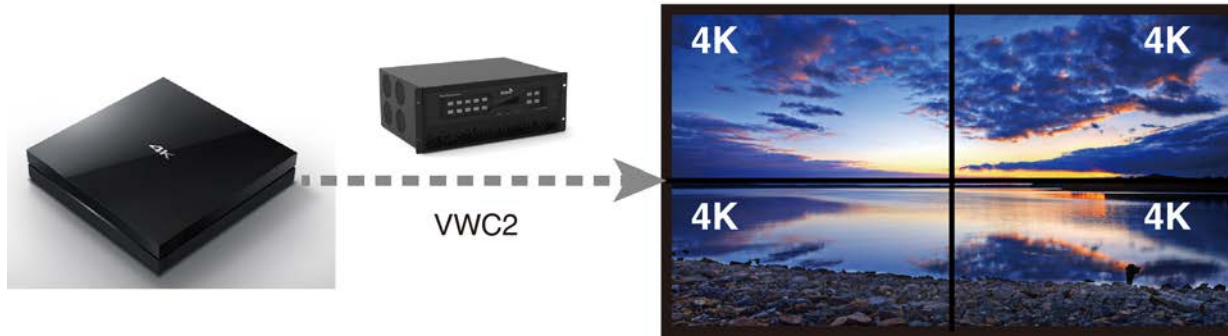
Your Next Generation Controller





Key Features

Vision: 4K Input & Output



- Input: Quad-Channel Per Card at 1080P, Dual-Channel Per Card at 4K
- Output: Quad-Channel Per Card at 1080P & 4K
- Maximum 3840x 2160 @30HZ, YUV 4:4:4

Key Features

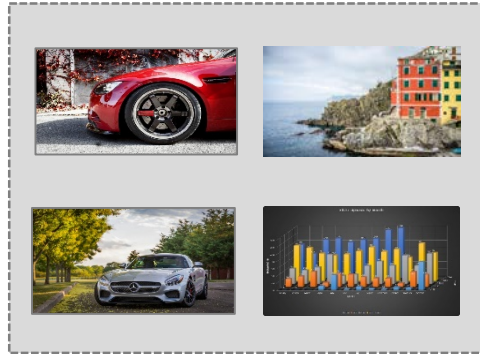
Vision: Scrolling Text



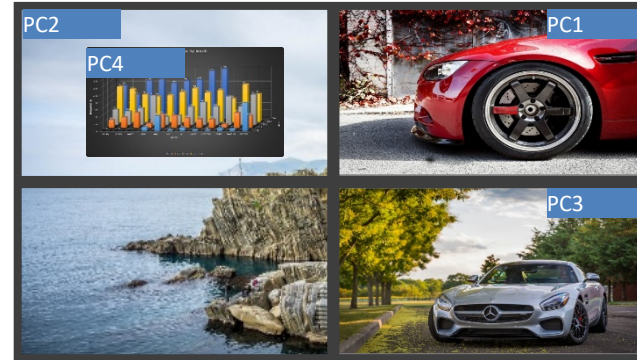
- Scrolling text to show news, notifications, or slogan
- Font, background, moving speed supported self-define

Key Features

Vision: OSD



Input

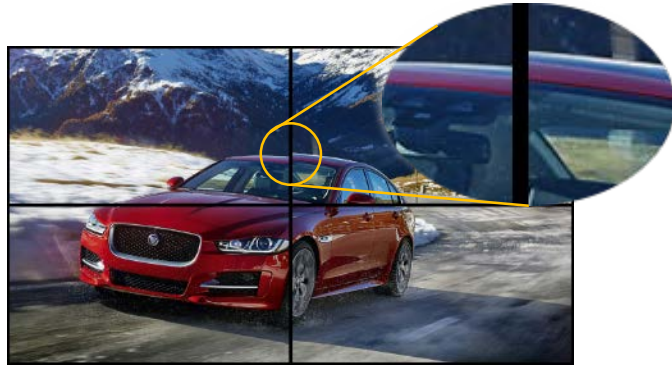


Video Wall

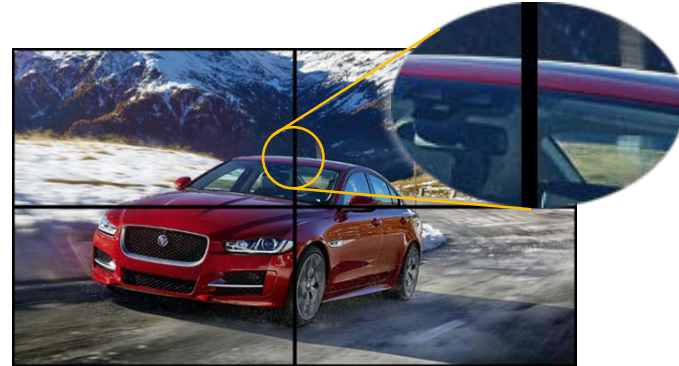
- Display input name on screen, support TEXT or IMAGE
- Easy to detect the input source
- Font, position, background, name, support self-define

Key Features

Vision: Smoothly Display & Synchronization



Competitors



VWC2

- No stuck, no trailing and frame tearing
- Sync of cross screen source
- Smooth Display of fast moving video

Key Features

Vision: Input Cropping



- Supports arbitrary cropping by pixel
- Zoom to emphasize detail

Key Features

Reliability: Structure



- Pure Hardware architecture
- Modular design: Flexible Configuration, Expandable and easy Maintenance.
- Hot-Swappable Redundant PSU
- Hot-swappable I/O Cards

Key Features

Reliability: Control Card Back Up



← Dual Control Card

- keep running the current scenario even both breaking down or swapped out
- Capable to import the configuration to restore

Key Features

Reliability: Powerful Processing Capability

PCI/PCI-E



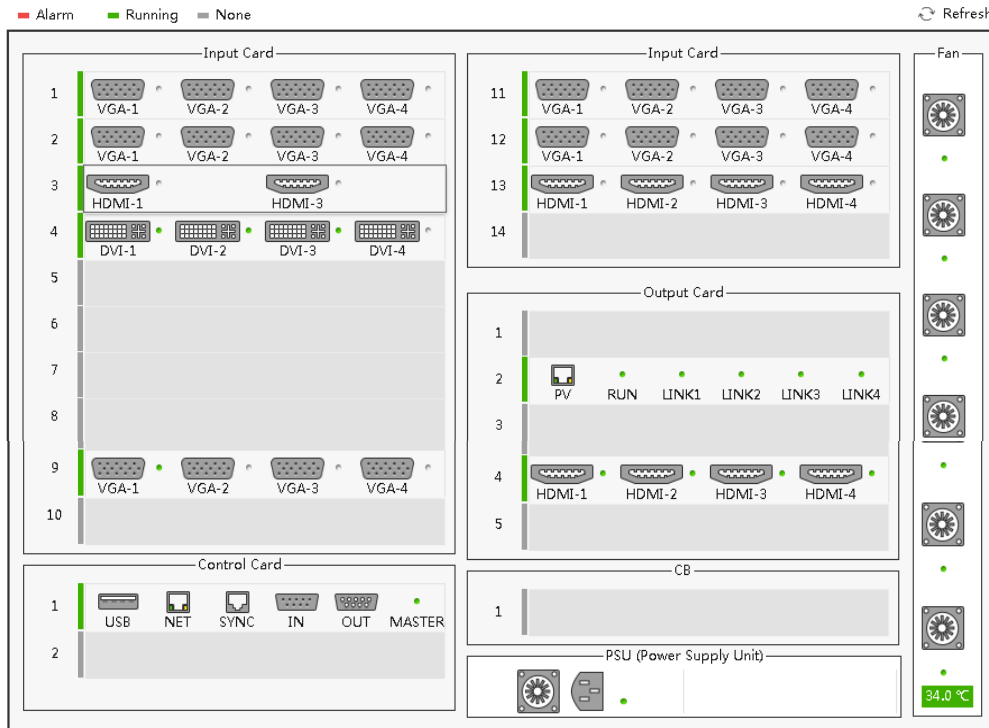
VS

Cross Point



Key Features

Reliability: Status Monitoring



card information

Basic Information

Name : 2-CH 4K-HDMI Input Card

SN : 01941641940115

HW Version : 1

MCU Boot : 1.0.0.6

MCU App : 1.0.0.19

FPGA1 Version : 2016090505

Running Information

Running Status : **Normal**

Card Temp : 39.0°C

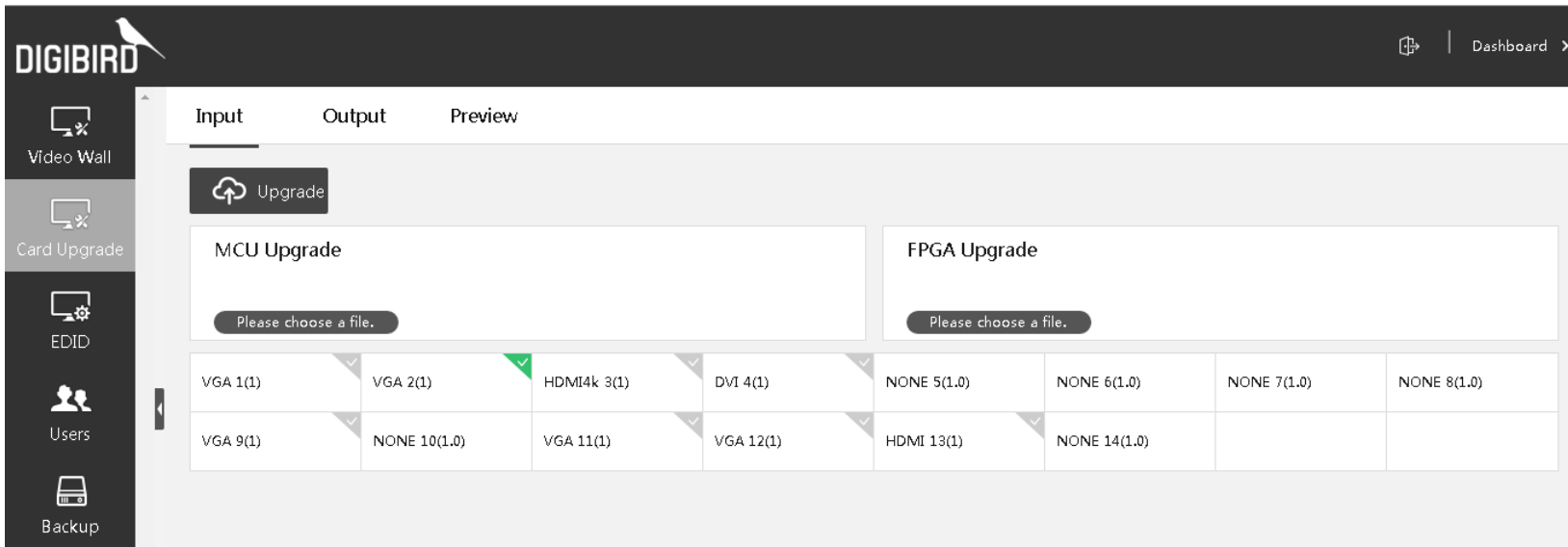
FPGA1 Temp : 55.7°C

HDMI4k-1 Resolution : 3840 * 2160

HDMI4k-3 Resolution : 3840 * 2160

Key Features

Reliability: Firmware Update



The screenshot displays the DIGIBIRD web interface. The top navigation bar includes the DIGIBIRD logo and a 'Dashboard' link. The left sidebar contains menu items: Video Wall, Card Upgrade, EDID, Users, and Backup. The main content area is divided into 'Input', 'Output', and 'Preview' tabs. Under the 'Input' tab, there are two upgrade sections: 'MCU Upgrade' and 'FPGA Upgrade', each with a 'Please choose a file.' button. Below these sections is a table of ports with dropdown menus for each.

VGA 1(1)	VGA 2(1)	HDMI4k 3(1)	DVI 4(1)	NONE 5(1.0)	NONE 6(1.0)	NONE 7(1.0)	NONE 8(1.0)
VGA 9(1)	NONE 10(1.0)	VGA 11(1)	VGA 12(1)	HDMI 13(1)	NONE 14(1.0)		

Key Features

Flexibility: Windows Layout



- Creates up to 4x windows per display
- Supports arbitrary layering, zooming in/out, stretching and picture in picture

Key Features

Flexibility: Web-based Control

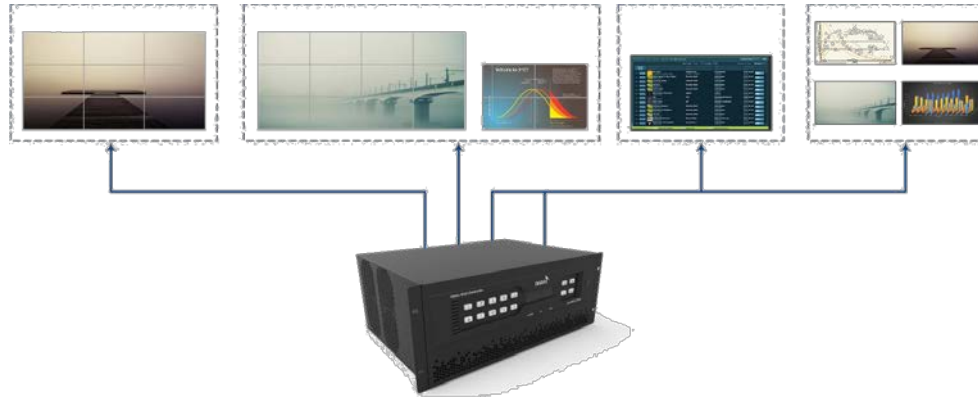


- PC, Mobile device supported
- No installation of control software
- **Via Google Chrome Browser**



Key Features

Flexibility: Multiple Video Wall



- Manage multiple groups video wall, each video wall can be different display device, resolution and size.
- Up to 4x groups for different resolution video wall, no limitation for same resolution video wall.
- Each video wall can share the input

Key Features

Flexibility: Visible Operation



Control Interface

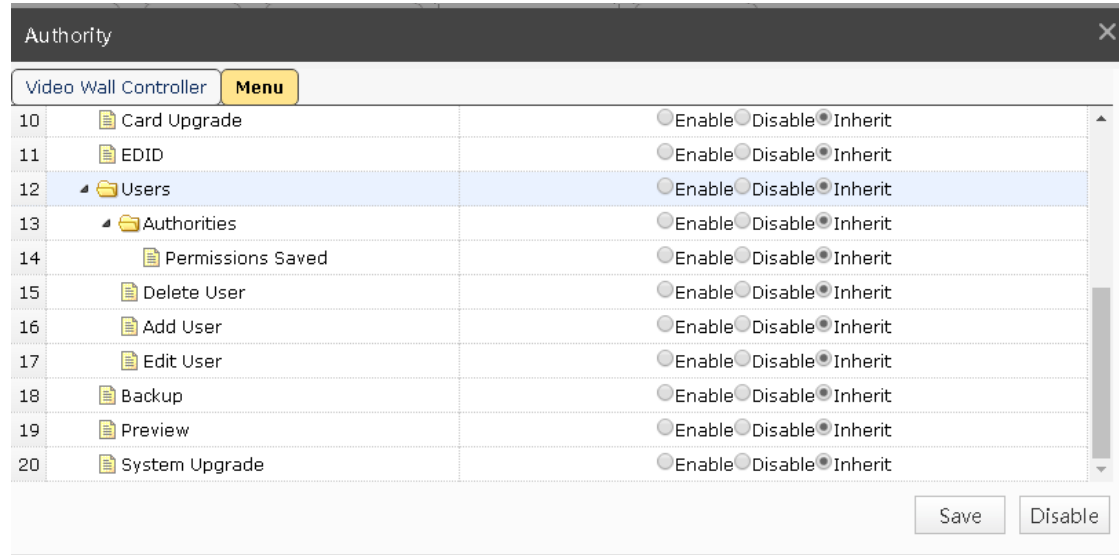


Video Wall

- View all input resource
- View virtual video wall display

Key Features

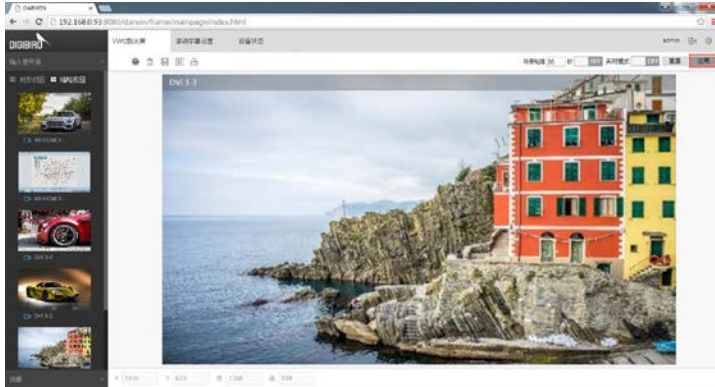
Flexibility: Precisely Access Level Management



- Multiple users concurrently
- Administrator is able to authorize different access level to user

Key Features

Flexibility: Pre-editing



- Editing the scenario without changing the video wall display before apply.

Key Features

Flexibility: Remote Standby & Wakeup



- Remotely Standby or Wakeup via One-Touch operation

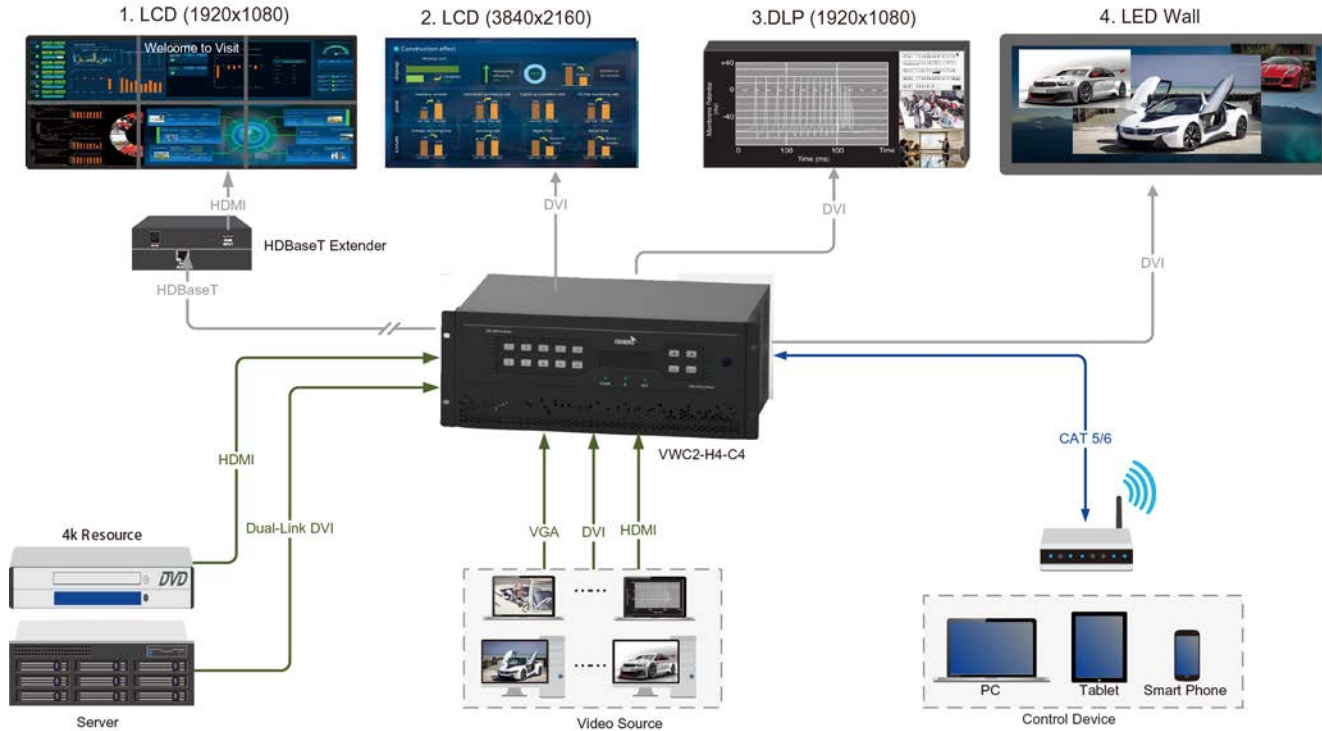
Products Range

Model	VWC2-H4-C4	VWC2-H4-C6	VWC2-H4-C14	VWC2-H4-C19
Chassis Size	4U	6U	14U	19U
Max Input	32(HD) or 16(4K)	56(HD) or 28(4K)	108(HD) or 54(4K)	148(HD) or 74(4K)
Max Output	12	20	40	80
Default + Redundant PSU	2	2	4	4
Power	110-240V AC, 50-60Hz			
Operating Temperature	0° -50°C (32° -112° F)			
Operating Humidity	<90% (Non-condensing)			

B. Specification

Input	Max. Resolution	Type
DVI(Single Link)	1920*1200@60Hz	DVI-D
DVI(Dual Link)	3840*2160@30Hz	DL-DVI-D
HDMI	1920*1200@60Hz	HDMI1.3
4K HDMI	3840*2160@30Hz	HDMI1.4
DP	3840*2160@30Hz	DisplayPort 1.1
VGA	1920*1200@60Hz	RGBHV
SDI	1920*1080@60Hz	SD/HD/3G SDI
CVBS	720*480/720*576	NTSC/PAL
YPbPr	1920*1080@60Hz	YPbPr
Output	Max. Resolution	Type
DVI(Single Link)	1920*1200@60Hz	DVI-I
HDMI	1920*1200@60Hz	HDMI1.3
4K HDMI	3840*2160@30Hz	HDMI1.4
NPC	-	IP
HDBaseT	3840*2160@30Hz	HDBaseT

Diagram



Thanks!

<http://www.digibirdtech.com/>