

Pro A/V Innovator



# DB-VRC4H-360F

## 4K HDMI Compact Video Wall Controller

Unlimited Creativity in every Degree



**DIGIBIRD TECHNOLOGY CO., LTD.**  
LONGGUAN BUSINESS CENTER, SUITE 501  
HUILONGGUAN WEST STREET, CHANGPING  
BEIJING, CHINA, 102208  
SALES@DIGIBIRDTECH.COM

WWW.DIGIBIRDTECH.COM

## DB-VRC4H-360F 4K HDMI Compact Video Wall Controller

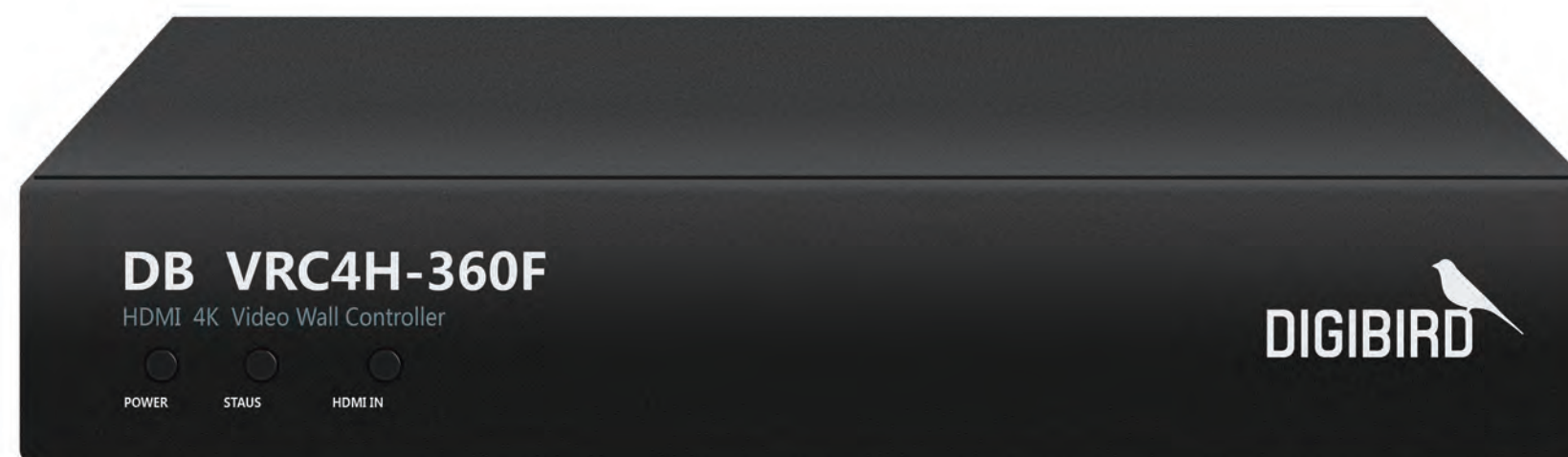
- ANY DEGREE SCREEN ROTATION

The DigiBird® DB-VRC4H-360F Video Wall Controller is the simplest and most cost-effective solution to build an eye-catching and creative video wall. It is an ideal video wall solution for retail stores, shopping malls, restaurants, sport bars, hotel lobbies, trade shows and entertainment venues.

The DB-VRC4H-360F breaks the limitations of the traditional video wall alignment. Unlike traditional video wall controllers or processors, each DB-VRC4H-360F output can be independently rotated by any degree in 0.1-degree increments. It also supports the alignment of varying resolutions and display sizes to build an asymmetrical, distinctive video wall. The DB-VRC4H-360F is a compact video wall controller/processor that features one 4K HDMI input which provides 4K UHD input capability, flexibly routing the input to four full HD output displays.

## CONTENTS

<b>01</b>	DB-VRC4H-360F 4KHDMI Compact Video Wall Controller	<b>08</b>	Connection Diagram
<b>02</b>	Key Features of the DB-VRC4H-360F Video Wall Controller	<b>09</b>	Front Panel
<b>03</b>	Technical Specifications	<b>09</b>	Rear Panel
<b>04</b>	DB-VRC4H-360F Control & Design Software	<b>09</b>	Certification
<b>05</b>	Video Wall Layout Examples		



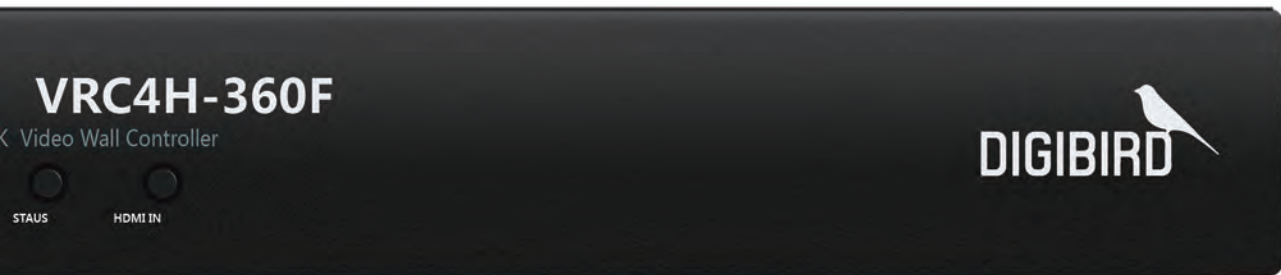


## Key Features

- Controls up to four displays in any video wall configuration.
- Cascade up to four units to create walls with more than four displays by the HDMI 1.4 loop out port and SYNC ports.
- Automatically compensates for the screen bezels of the video wall.
- Supports image rotation and mirroring. Each output can be independently rotated by any degree in 0.1-degree increments and flipped or mirrored horizontally or vertically.
- The displays aligned in the video wall can be of different sizes and of native resolution.
- Supports automatic frame lock. When the timings of the four monitors are the same, genlock will be activated. The genlock feature guarantees fluid motion video and minimizes latency. Accepts HDMI 1.4 input signal format, HDCP 1.4 compatible, maximum resolution up to 8000 x 4000@15Hz
- Automatic Input Resolution Detection. The input port of the DB-VRC4H-360F can be connected to a HDMI Matrix Switcher; the end user can then easily switch input sources over the HDMI Matrix switcher, even from a 4K source to a 1080p source, with no need to reconfigure the DB-VRC4H-360F.
- Supports connections to four HDMI displays, and all VESA resolutions (up to 1920x1200@60Hz) are supported.
- The input source can be cropped at the user's discretion and copied to output monitors. The smallest cropping area is one pixel.
- Embedded HDMI Audio
- Supports flexible EDID management.
- Automatic input and output signal detection.
- Configured using Windows-based software (Windows® XP, Windows® 7, Windows® 8, Windows® 10 compatible) installed on a PC connected via USB.
- Durable, stainless steel chassis.

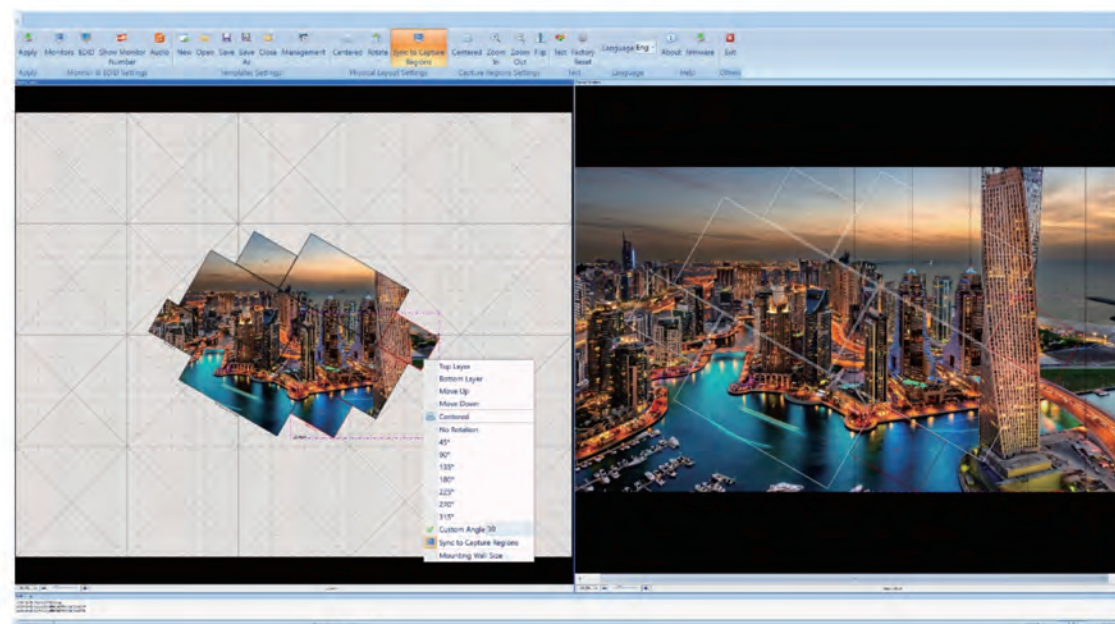
## Specifications

- **Input Connector**  
1 x HDMI Type A, 19-pin, female, locking
- **Input Format**  
HDMI 1.4  
Maximum Input Resolution: 8000 x 4000@15Hz
- **Input Clock Rate**  
297MHz
- **Input Bandwidth**  
8.91Gbps
- **Input/output Sync**  
Yes, 2 x Ethernet Port
- **Output Connectors**  
4 x HDMI Type A, 19-pin, female, locking
- **Output Format**  
HDMI 1.3
- **Loop Out**  
1 x HDMI Type A, 19-pin, female, locking, HDMI 1.4
- **Output Resolution**  
up to 1920 x 1200 @60Hz
- **Output Display Sizes**  
Different display size for each output channel
- **Feature**
  - o Any Degree Screen Rotation
  - o Unlimited up-scaling for original cropped area
  - o EDID management
  - o Bezel compensation
  - o Cropping
  - o Flipping
  - o Cascading
  - LED Indicators: Power, Input, Status
  - Control: USB-B connector (USB 2.0)
- **Power: Input**
  - o 100-240 VAC, 0.8 Amps
  - o Output: 12 VDC, ≤ 2 Amps
  - o Consumption: ≤ 24 Watts
- **Operating Humidity**  
90% non-condensing
- **Operating Temperature**  
32° to 104°F (0° to 40°C)
- **Dimensions (without rackmount)**  
1.75"H x 8.07" W x 8.39" D (44.5mm x 205mm x 213mm)  
Dimensions (with rackmount) 1.75"H x 9.92" W x 8.39" D (44.5mm x 252mm x 213mm)  
Package Dimensions 3.74"H x 17.72" W x 12.20" D (95mm x 450mm x 310mm)  
Net Weight 2.09 lbs. / 0.95 Kg



## DB-VRC4H-360F Control & Design Software

The DB-VRC4H-360F Control and Design Software is a Microsoft® Windows® based application that is used to control the DB-VRC4H-360F Video Wall Controller from your computer via a USB cable with the DB-VRC4H-360F processor. DB-VRC4H-360F Control and Design Software is included with the DB-VRC4H-360F and available for download at [digibirdtech.com](http://digibirdtech.com).



## Video Wall Layout Examples

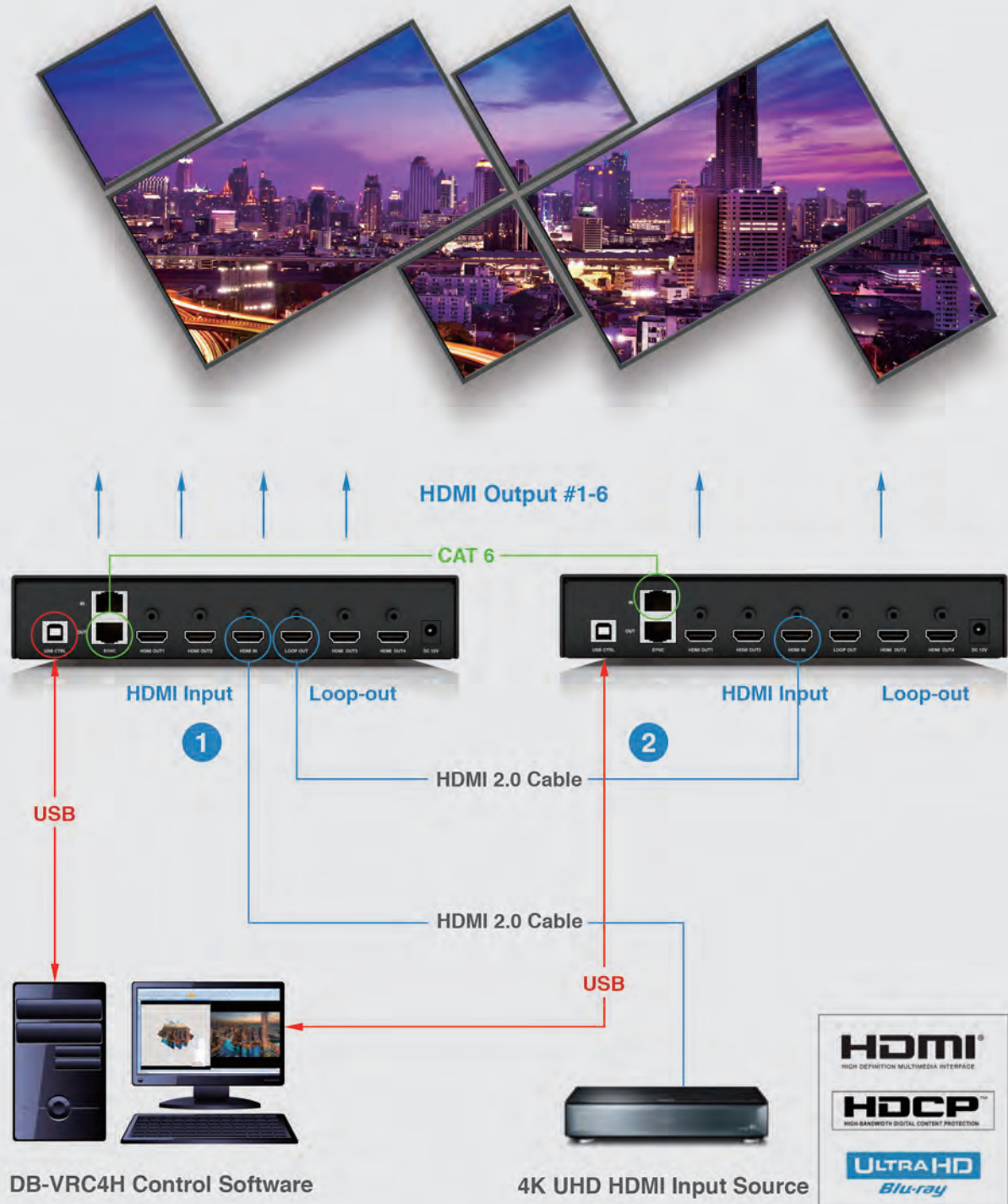


# Video Wall Layout Examples



## Connection Diagram

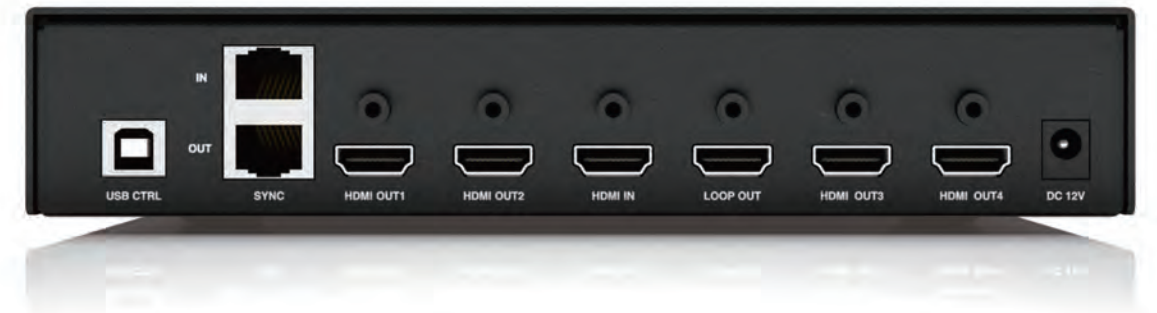
6-Screen Mosaic Video Wall Powered by DigiBird DB-VRC4H-360F



## Front Panel



## Rear Panel



## Certification

