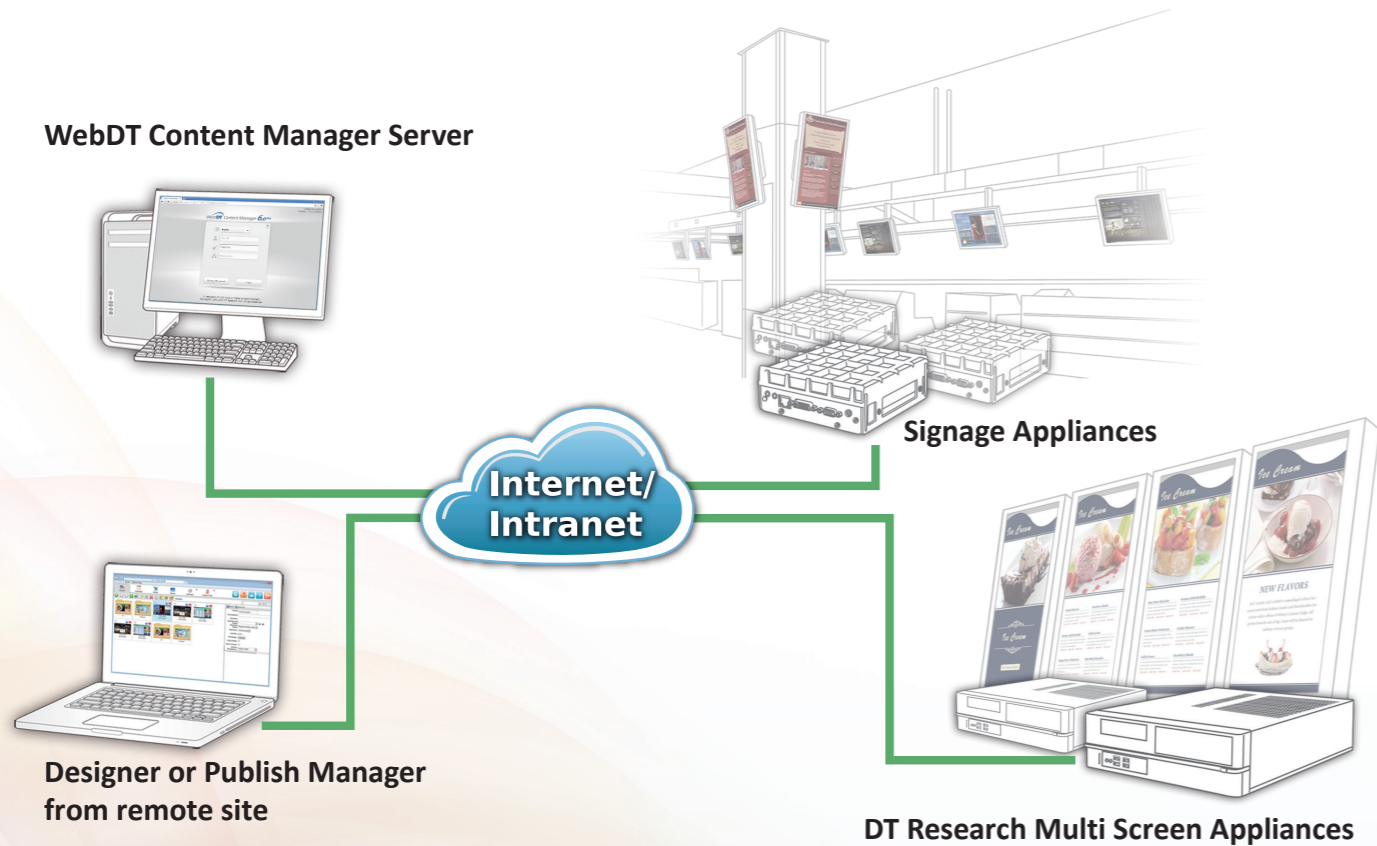


• System Architecture



• Media Formats Supported

Image	JPEG (.jpg, .jpeg), BMP (.bmp), PNG (.png), TIFF (.tif, tiff), GIF (.gif) – less than 2048 X 2048 pixels, TGA (.tga) and PCX (.pcx)
Audio	MP3 (.mp3), MP2 (.mp2), Wave Audio (.wav), Windows Media Audio (.wma), MIDI (.midi, .mid), RealNetworks Real Audio (.rmi), Audio Interchange File Format (.aif), AU (.au), SND (.snd), MP4 (.mp4) and Advanced Systems Format (.asf)
Multimedia	Adobe Macromedia Flash (.swf), MP4 (.mp4) (de-interlaced only), MMS, RTSP, ZIP (Multi-file html site or flash site), Flash Video (.flv) (de-interlaced/progressive only), MPEG1/2 (.mpe, .mpg, .mpeg) (de-interlaced/progressive only), Window Media Video (.wmv, .asf, asx) (de-interlaced/progressive only), AVI (.avi) (de-interlaced/progressive only), DVD Video (.vob) (de-interlaced/progressive only), Apple QuickTime (.mov) (de-interlaced/progressive only), mts/ts/mkv/m2ts, and HTML (.html, .htm) (Internet Explorer support required)
Others	Flash/HTML Widget, PPT (.ppt,pps), Executable Application (VLC Player, Kiosk Application, etc), Executable Application, ZIP, Video-in and TV Tuner (selected areas)

WebDT Content Manager

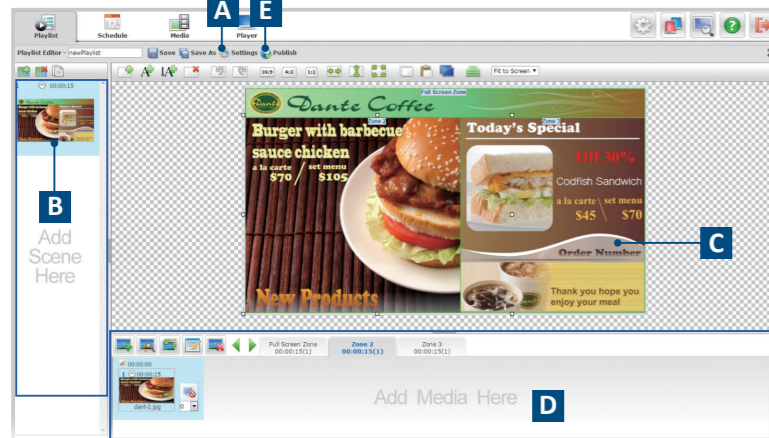
Minimize Costs, Maximize Communications



- | Streamline Operations | Remote Management | Enhanced Security | High Scalability & Rich Feature Sets |
|--|---|---|--|
| <ul style="list-style-type: none"> Intuitive graphical interface 3 steps to publish attractive messages One click to publish Urgent Cast to the entire signage network Outlook style content publish navigation; drag and drop operation Switch among Day/Week/Month/Agenda/Spot List view for schedule editing | <ul style="list-style-type: none"> Web-based browser interface, manage from anywhere, anytime Online download media playlist templates and widgets Remote monitor the media uploading process, playlist publish status Auto refresh snap-shot image of the player's current scheduled event in progress Schedule power management - shut down, reboot and wake up for each signage appliance | <ul style="list-style-type: none"> Publish server/edge server design for large installations & bandwidth optimization Auto recovery, watch dog, smart cleaner and media encryption to prevent any unexpected error due to network problem or malicious modification Monitor player status, log all activities and generate reports Microsoft Active Directory support | <ul style="list-style-type: none"> Support rich types of multimedia formats HTML5 Widget Editor/ Menu Board Editor module included Global ticker on all scenes within a scheduled playlist Create roles and assign account with specific privileges Support real-time data feed Leading multi- and irregular screen solution (only with DT Research Multi Screen Appliances) Screen control by RS232 port Media control and event trigger SDK provided |

• Playlist Editor

Playlist Editor is a featured tool to edit a playlist with single or multiple scenes with a quick publish function. Within Playlist Editor, a simple 3-step procedure will allow users to complete a dynamic content publish in minutes: Define the playlist resolution/orientation, Create multimedia and ticker zones to add media content, and Publish to selected groups.



- ▶ Streamlined workflow with online download playlist templates
- ▶ One playlist may contain multiple scenes with different layouts
- ▶ Media shuffle play - files in the zones can be played randomly
- ▶ One quick button to replace media files
- ▶ Multi-screen layout support
- ▶ Import and export playlists support

A Playlist Settings: Define playlist resolution/orientation, screen layout and privilege settings

B Scene List: Add one or multiple scenes with different layout and media

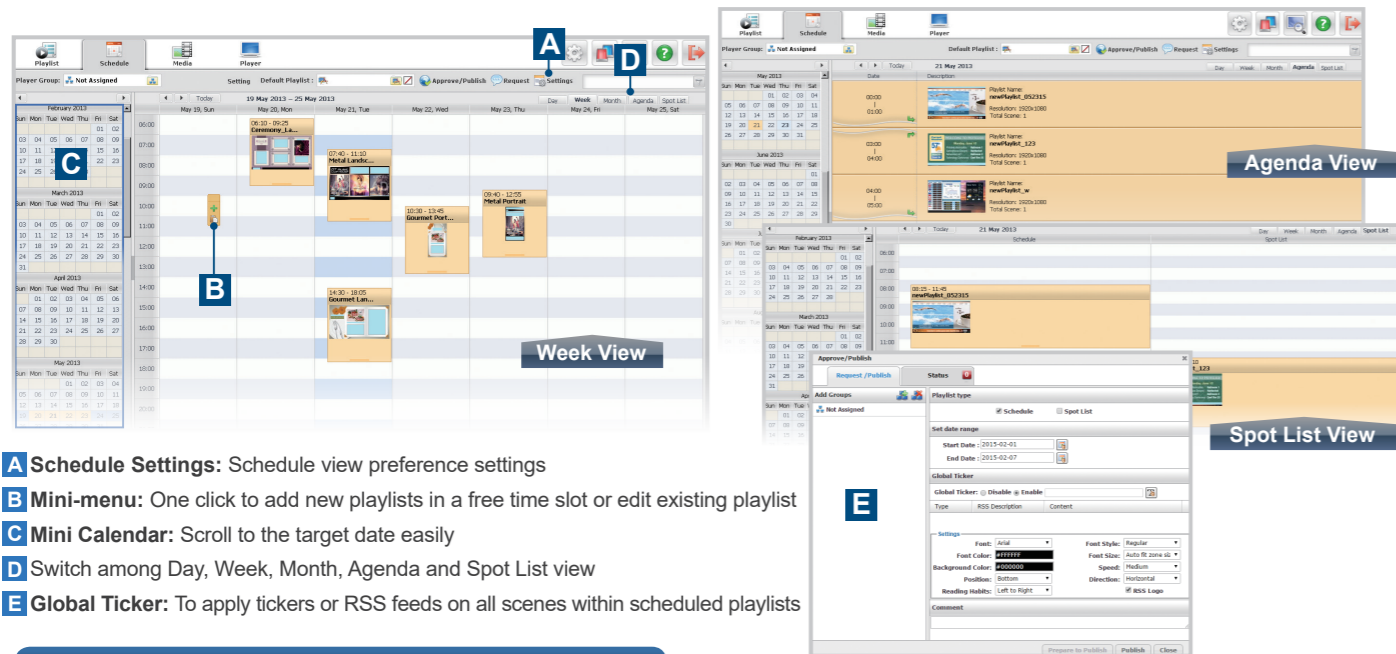
C Layout Work Area: Design and preview playlist layout, double click a zone to view and modify privileges and attributes

D Media List: Insert media files to each zone, adjust duration and add transition effects here, drag and drop to adjust media file order

E Quick Publish: One click to publish the playlist

• Schedule

A brand new calendar interface to manage and view playlist schedules conveniently. Use drag and drop operation and the mini-menu to edit your schedule in different calendar view: Day/ Week/ Month/ Agenda/ Spot List.



A Schedule Settings: Schedule view preference settings

B Mini-menu: One click to add new playlists in a free time slot or edit existing playlist

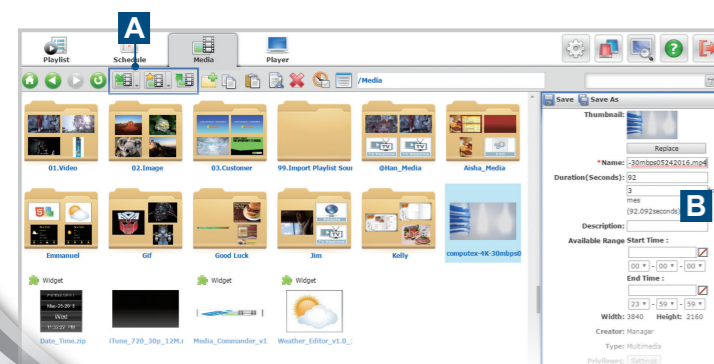
C Mini Calendar: Scroll to the target date easily

D Switch among Day, Week, Month, Agenda and Spot List view

E Global Ticker: To apply tickers or RSS feeds on all scenes within scheduled playlists

• Media Library

WCM 6 Pro supports a variety of multimedia formats as well as HTML5/ Flash Widget, real-time video-in, executable applications and remote URL. Manage, edit and preview all types of media files in Media Library.

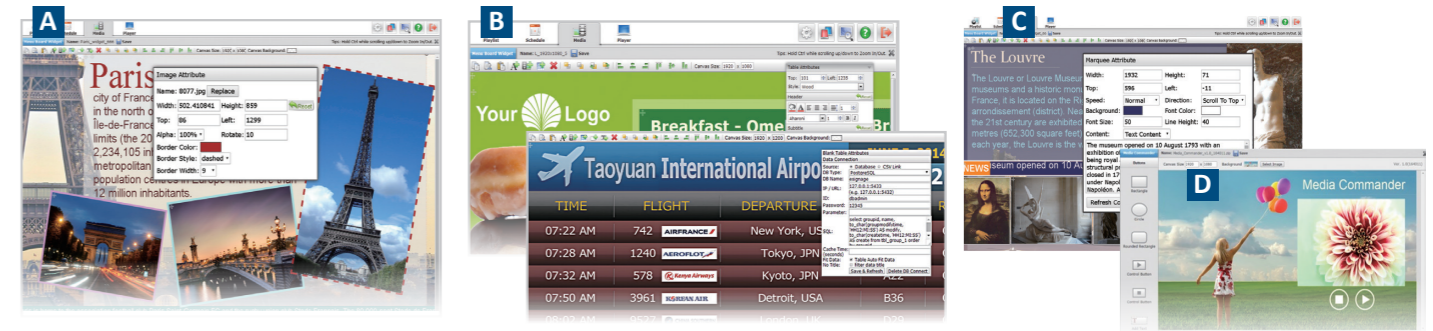


A Import/Download/Export/Add Special Media: One click to import, download or export multimedia files or add special media files

B Media Attributes: View media attributes – size, dimension, path, available range and privilege

• HTML5 Widget Editor/ Menu Board Editor

This module is a composer available to download online from WCM 6 Pro. The composer allows users to quickly create or edit content for playlists.



A Add Media: Add image, video, Flash, text or rectangles as content or background. The images and text on the canvas can be rotated

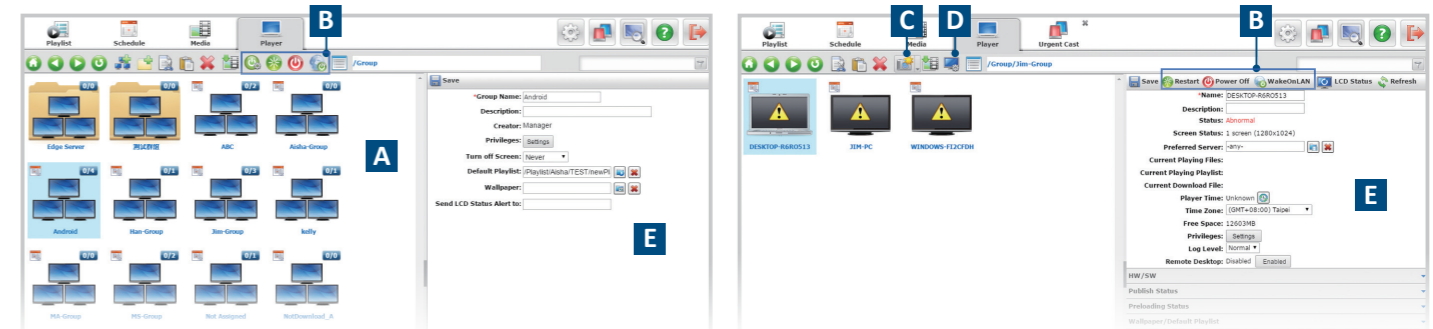
B Add Table/ Menu Board: The table/ menu board attribute panel appears to define table dimension, choose style and edit attributes. It also allows to connect with TXT, XML, CSV format files and to database systems for receiving the real-time data information, transparent background ticker, etc.

C Rolling Text/ RSS for Creative Content Design: An attribute panel for adding and adjusting the value of ticker/rolling texts. It supports scrolling the texts to left as a ticker or scrolling to top as rolling text

D Media Commander: Create a panel for interactive media control

• Player

Create, manage and monitor player groups in this interface. View player group settings, current download and playback status, take snapshots or execute power on/off commands.



A Folder/Group Thumbnails: Folder, group and player are in different thumbnails; add, manage and view them clearly by thumbnail view

B Power Management: Remotely manage the signage player/group to schedule power on/off, restart, power off or WOL immediately

C Snapshot: Take or set automatic refresh snapshot for selected players and display in player thumbnails

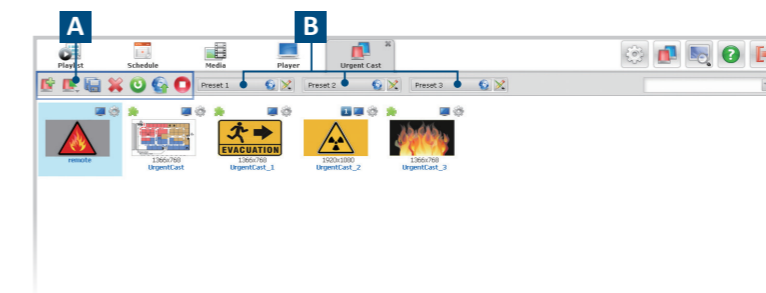
D Screen Control: Schedule screen control settings for target players via RS232 port

E Attribute Panel for Folder/Group/Player: Display all folder, group, player attributes and settings, each level contains different available functions

- ▶ Players in the same LAN can be registered automatically
- ▶ Preload media files to players to save download time after publishing
- ▶ Set start up and shut down time to player groups
- ▶ Remotely schedule patch update for target players
- ▶ Exclusive mobile phone user interface

• Urgent Cast

An Urgent Cast could be a playlist or an Urgent Cast widget. There are 3 preset buttons to assign different Urgent Cast content to multiple player groups. Whenever there is an emergency situation, clicking the preset Urgent Cast button will publish the dynamic content as defined to all target players.



A Urgent Cast Tool Bar: Create, upload, edit, publish or stop the Urgent Cast files

B Preset Buttons: To assign corresponding Urgent Cast files to multiple different player groups, so users can apply Urgent Cast broadcasting by one-click action

- ▶ You can edit the duration, privilege of an Urgent Cast file and have the option to lock the signage screens while playing the content
- ▶ Preload Urgent Cast files for immediate playback within limited bandwidth
- ▶ Exclusive mobile phone user interface